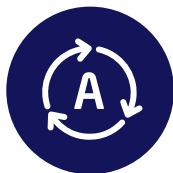


# OPTOMED AURORA® IQ

Handheld fundus camera



Autofocus and  
autoexposure



New high  
contrast optical  
design



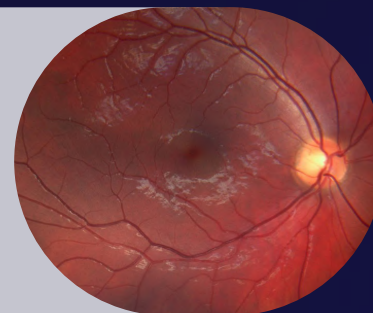
50 degrees field of  
view with non-myd  
operation



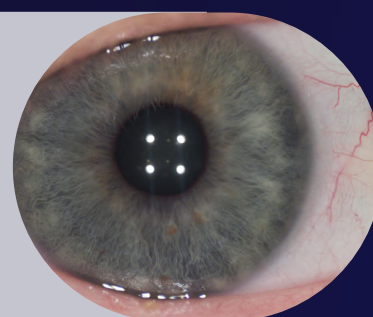
Cloud connectivity  
to optional  
AI service



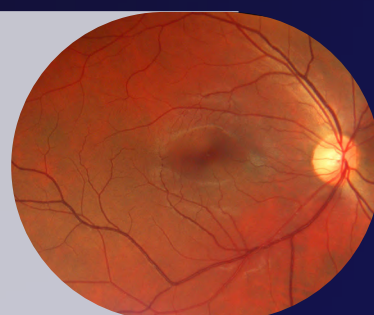
Handheld  
fundus camera



Eye surface  
imaging



Can be mounted  
to a slit lamp







## What Aurora IQ offers

### Image quality

- **50 degrees field of view** combined with **non-mydriatic operation** allow a detailed examination and ease of use in various use cases.
- **New high contrast optical design** helps to detect small early phase retinal changes.

### Intelligent features

- **Autofocus and autoexposure** allow quick usage of the camera without any setting modifications in various use cases.
- **Integrated image quality analysis** guides first time users to acquire successful images and therefore minimizes training time.
- **Pin code protection** can be used for ensuring data safety.

### Connectivity

- **WLAN and USB connections for image transfer** and various ways of handling image data are supported by the camera.
- **Integrated Cloud connection** allows sending images to an optional AI service for image analysis.

# Technical specification

|                          |  |
|--------------------------|--|
| TYPE                     | Non-mydriatric digital fundus camera               |
| FIELD OF VIEW            | 50 degrees (total FOV 50x40)                       |
| CAMERA SENSOR RESOLUTION | 5 Mpix   |
| OPTICAL RESOLUTION       | > 60 lp/mm (ISO10940:2009)                         |
| FIXATION TARGETS         | 9 internal fixation targets for peripheral imaging |
| FOCUS RANGE              | Autofocus, -20D to +20D                            |
| MINIMUM PUPIL SIZE       | 3.1 mm   |
| IMAGE FORMAT             | JPEG   |
| VIDEO FORMAT             | MPEG-4   |
| DISPLAY                  | TFT-LCD: 4", 800x480                               |
| MEMORY                   | 8GB  |
| BATTERY                  | Rechargeable 3.63V/2600mAh Li-ion Battery          |
| CONNECTIVITY             | WLAN, USB  |
| TYPE OF PHOTOGRAPHY      | Color, Red-free, IR                                |
| DIMENSIONS AND WEIGHT:   |  |
| Aurora camera            | 122(w) x 202(h) x 98 (l) mm, 526g                  |
| Aurora retinal module    | 68 (w) x 74 (h) x 160 (l) mm, 327g                 |
| Aurora anterior module   | 71 (w) x 80 (h) x 79 (l) mm, 105g                  |
| WARRANTY                 | 2 years excluding batteries                        |



Tabade Pharmaceutical Chemists Limited | Kareem Adeniji  
1 Majaro Street Onike, Yaba, Lagos State, Nigeria  
kareem\_85@yahoo.com | +234 818 672 6227 | [www.tabade.com/auroraiq](http://www.tabade.com/auroraiq)

